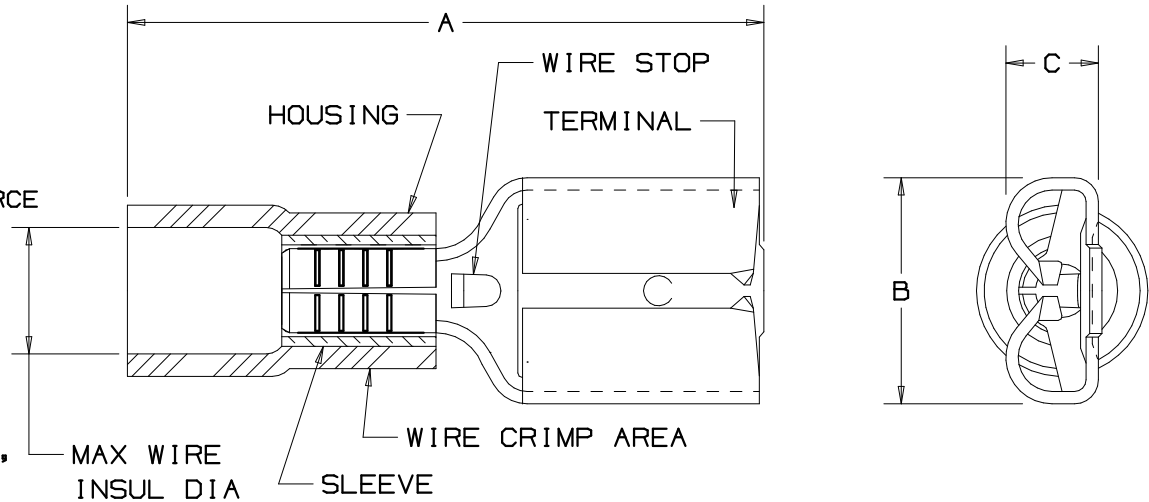


THIS COPY IS PROVIDED ON A RESTRICTED BASIS AND IS NOT TO BE USED IN ANY WAY DETRIMENTAL TO THE INTERESTS OF PANDUIT CORP.

PART NUMBER	TAB SIZE	WIRE RANGE AWG	COLOR	MAX. INSUL.	DIMENSIONS in.		
					A ±.03	B ±.01	C ±.01
DV10-250	.250 X .032	12-10	YELLOW	.229 (5.82)	1.03 (26.16)	.30 (7.62)	.13 (3.30)

NOTES:

- UL RECOGNIZED AND CSA CERTIFIED FOR:
 - 600V MAX VOLTAGE RATING
 - 194°F (90°C) MAX TEMP RATING
 - STRANDED COPPER WIRE ONLY
 - 6-12 LBS INITIAL INSERTION/WITHDRAWAL FORCE
- MATERIAL:
 - STAMPING-BRASS, TIN PLATED
 - HOUSING-VINYL
 - SLEEVE-BRASS, TIN PLATED
- DIMENSIONS IN BRACKETS ARE IN mm OR mm²
- INSTALLATION TOOLS: UL/CSA: CT-550, CT-1551, CT-1550
 PANDUIT RECOMMENDED: CT-100, CT-160, CT-260, CT-460
- PACKAGE QTY: -L=50, -D=500
- WIRE STRIP LENGTH: 9/32 ^{+1/32}₋₀ (7.1 ⁺⁸₋₀)



CERTIFIED
LR31212



RECOGNIZED
E78522

06	6/06	DAW	DAW	REMOVED MAX. AMPERAGE NOTE			
05	7/03	KLFU	SKB	ADDED INTERNAL SERRATIONS	12453	SKB	TRO
04	1/01	KMD	SKB	CAD FILE SPEC. WAS N41199AA_PCD_03	8938	JAC	CCH
03	5/99	JKD		ADDED CT-1551 & CT-1550 TOOLS	07642		
02	3/95	MS	RLS	UPDATED NOTES AND DIMENSIONS	03048	LA	JB
REV	DATE	BY	CHK	DESCRIPTION	ECN #	CUST	PM

A41199_06

PANDUIT CORP.

TINLEY PARK, ILLINOIS

FEMALE DISCONNECTS, VINYL INSULATED
.250 X .032

DRAWN BY: FES CHK'D: RLS SCALE: NONE DRAWING NO.: A41199